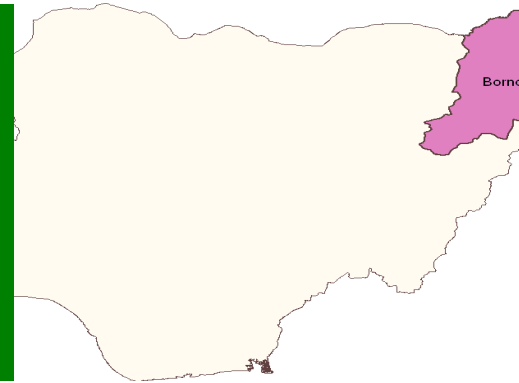


Borno Sanctuary



Contents

Major challenges unique to Borno

Addressing the major challenges

Emerging Results

CHALLENGES TO THE PROGRAM IN BORNO (1/2)

Category

Description

Security

- Security Challenges in some rural and urban LGAs (MMC, Jere, Biu, Bama, Kaga, Damboa, Gubio, Kukawa, Mafa, Dikwa and Ngala) with restriction of movement and poor coverage.
- Target population in those LGAs are 50% of the state target population (785,643)

Team performance

- Poor team performance in Mafa, Bama, Gwoza, Monguno, Abadam, MMC and Jere.
- (15% of teams not asking key questions, 20% not taking off in time and 10% not recording non compliance)
- High proportion (60%) of missed children due to child absent in Konduga, Dikwa, Damboa, Kaga and Magumeri because of farming season

Compliance

- Persistent non compliance in the metropolitan LGAs and Semi urban LGAs

Governance

- Inadequate commitment of chairmen of LGAs
- Partial functioning of State and LGA TFIs
- Poor participation of TLs in pre implementation and implementation activities

CHALLENGES TO THE PROGRAM IN BORNO (2/2)

Category

Description

Access

- Inaccessibility of some wards due to water logging during rainy season in Bama, Kala balge , and Jere.
- Missed island settlements in Kukawa LGA : Alagarno, & Doro wards (Lake Chad) due to inaccessibility, poor micro planning
- Missed settlements
 - Kukawa LGA= Missed island settlements in Alagarno, & Doro wards (Lake Chad) due to inaccessibility, poor micro plan, poor team performance and inadequate supervision

Migrant populations

- High influx of international nomads during Rainy season (June-Sept) who are mainly Zero Dose. WPV isolated in 2011 from Marte and Monguno LGAs among nomads.

New viral strains

- Orphan viruses isolated in the State early 2012 in Konduga LGA

Contents

Major challenges unique to Borno

Addressing the major challenges

Emerging Results

ACTIONS TAKEN TO ADDRESS CHALLENGES IN BORNO (1/4)

Category

INTERVENTION

Results

Security

- Engagement of local personnel in most activities
- Rescheduling of planned activities where threats were perceived to be high or encountered
- Engagement of religious women group (FOMWAN) to work in security compromised areas (women are not targeted)
- Health facility based vaccination post (Mainok and Tamsumgamduwa in Mafa and Kaga LGAs)

- All Areas accessed except 40% Tamsugamduwa ward in Mafa (TP 4122) and 30% of MMC (88212 Under 5)in Oct 2012 IPDs

Team Performance

- Intensify supervision of the teams
- Staggered ward level training to ensure quality
- Establishment of selection committee at ward level to select only qualified personnel
- Additional local allowance from state to boost morale of teams
- Use of innovations to improve team performance
- 20 VCM and 11 TBAs mobilized to supervise the teams in Bama .
- Implementation of systematic revisit strategy made up of special revisit teams/engagement of FOMWAN members at one/team, farm immunisation as well evening immunisation

- Bama LGA LQAs result accepted at >90% coverage
- All teams take off in time in Oct 2012 IPDs
- Improved documentation of non compliant House holds
- Missed children due to child absent reduced from 60% of missed children in February 2012 IPDs to 27% in Sept 2012 IPDs

ACTIONS TAKEN TO ADDRESS CHALLENGES IN BORNO (2/4)

Category

INTERVENTION

Results

Compliance

- Advocacy to HRH the Shehu of Borno Emirs of Bama, Gwoza, Biu and Dikwa to share line list of non compliance and plan to address the issue
 - Sensitization meeting with 87 Chief Imams of Jummaat Mosque to support follow up to non compliance and community mobilization
 - Engagement of 587 FOMWAN Women Mobilizers in HR LGAs for May ,July and September rounds to support community Mobilization and reduce Non compliance concealment
 - Engagement of 150 VCM in 7 HR LGAs
 - Orientation of TBAs/Town Announcers to assist in proper information dissemination
 - Community Dialogues in HR communities and Rapid response follow up to Non compliance by Traditional and religious leaders
- Letter from the Shehu of Bama ordering NC to accept or leave
 - Reported NC cases reduced from 18109 in March to 4872 in Sept 2012 IPDS
 - Unresolved NC cases reduced from 10778 in March 2012 to 2608 in Sept 2012 IPDS

ACTIONS TAKEN TO ADDRESS CHALLENGES IN BORNO (3/4)

Category

INTERVENTION

Results

Governance

- Meeting with H.E Governor directing all chairmen to personally ensure supervise IPDs and chair evening review meetings (66% of LGA Chairmen participated fully in Sept 2012 IPDS)
- State supported LGAs with funds for counterpart funding. How much released by state
- Funds provided for RI by the state 30, 000 to support RI.
- LGA TFI to submit monthly report of their activities to Dep. Gov via HC MoH.
- HE executive Governor met with all Emirs and directed them to ensure full participation.
- advocated to LGAs to support TLs with Logistics to supervise SIAs

- 66% of LGA Chairmen participated fully in Sept 2012 IPDS
- N43 Million counter part support from State every round this year
- STFI Re-inaugurated with Deputy Governor as Chairman
- 26/27 LGAs (96%) have functional TFI
- LGAs now support TLs with funding for logistics
- All senior Staff in LGAs Now participate in Monitoring IPDS

Orphan viruses

- Regular active case searches in all LGAs
- Engagement of Informants and TBAs s well as regular community sensitisation

- Regular contact with 126 informants across the 27 LGAs
- Non polio AFP rate has increased from 6.5 to 8.4 in August 2012 when compared to same period in 2011.

ACTIONS TAKEN TO ADDRESS CHALLENGES IN BORNO (4/4)

Category

INTERVENTION

Results

Access

- SIAD (Short interval additional Doses) done in May prior to commencement of Rains.
- Use of horses/trekking to access some of the settlements.(Kala Balge)
- House hold based micro plan with TLs conducted in the island with 7 new settlements discovered .
- Synchronisation meeting with Tchad republic to harmonise settlements at the borders .
- Deployment of 9 senior supervisors for adequate supervision each round.
- Provision of additional logistics for teams & supervisors

- Improved immunity of inaccessible areas during rainy season before the rains
- 7 new settlements discovered
- Increase in no. Of children immunised in Doro Ward (with Islands) from 26167 in Feb IPDs to 30,866 in Sept IPDs

Migrant populations

- Identification of Nomadic focal persons through Nomads associations and Ministry of Agriculture.
- Mapping of nomadic routes (Shuwa , Fulani, Tuaregs and Buduma tribes identified)
- Training/selection of special nomadic teams with Nomad representatives/guides

- 8456 Nomads children immunized in international border LGAs with 28% zero dose in Sept 2012 IPDs

Contents

Major challenges unique to Borno

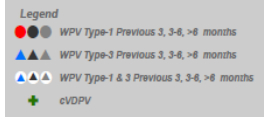
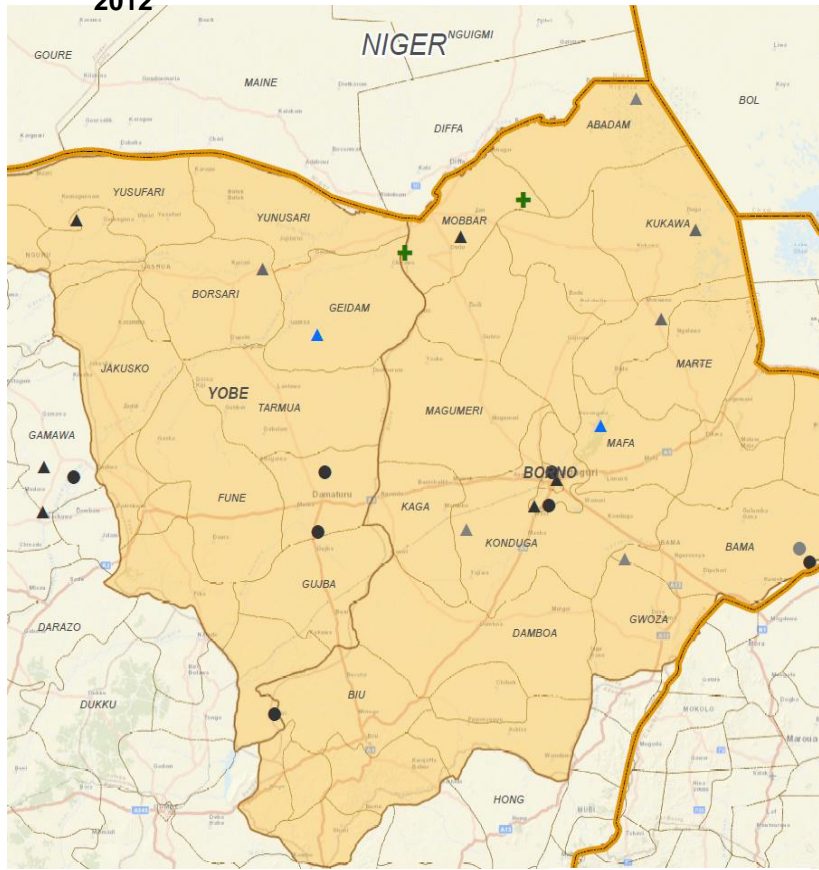
Addressing the major challenges

Emerging Results

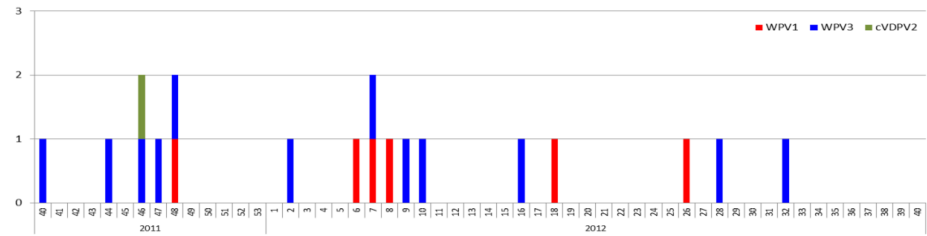
Improving trend in LQAs and OPV status of n-polio AFP cases

Borno and Yobe States

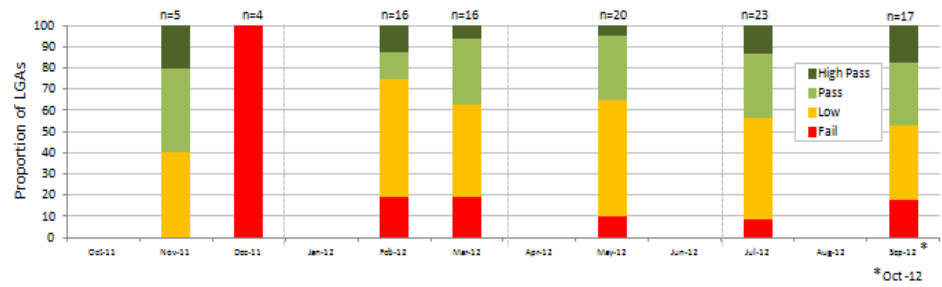
WPV and cVDPV cases October 2011 to September 2012



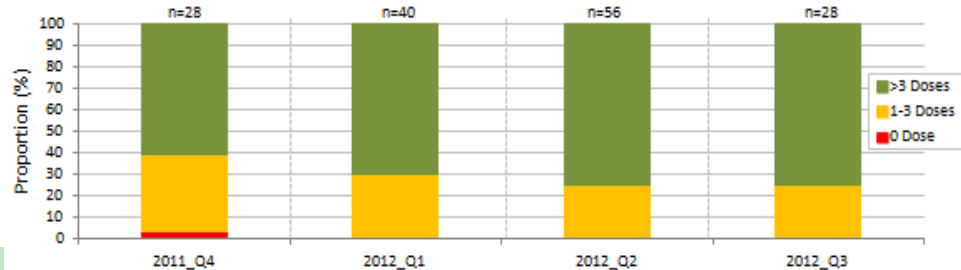
Wild Poliovirus and cVDPV cases, Borno and Yobe states



LQAs survey results by SIA



Proportion of non-polio AFP cases 6-35 mo by OPV status



Thank you