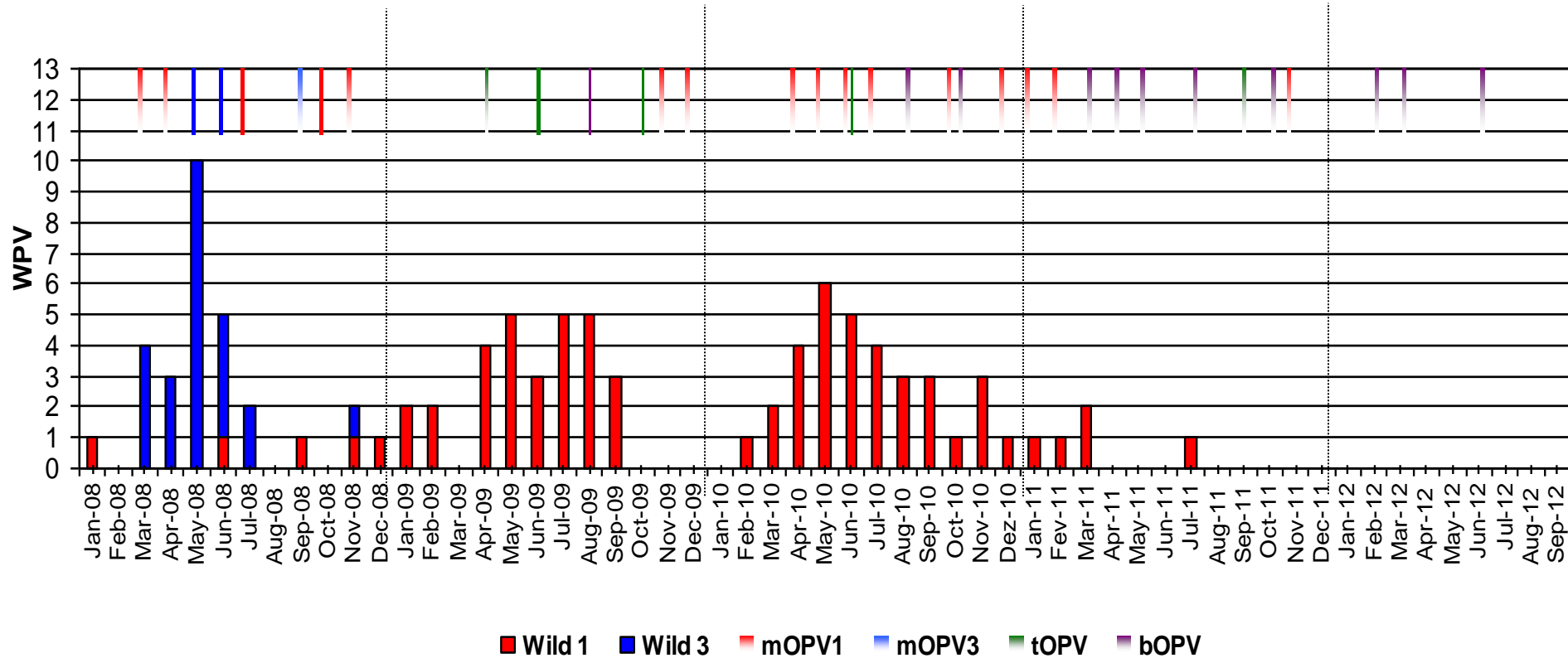


# Angola Polio Weekly Update

Week 42/2012

- Data updated as of 21<sup>st</sup> October -

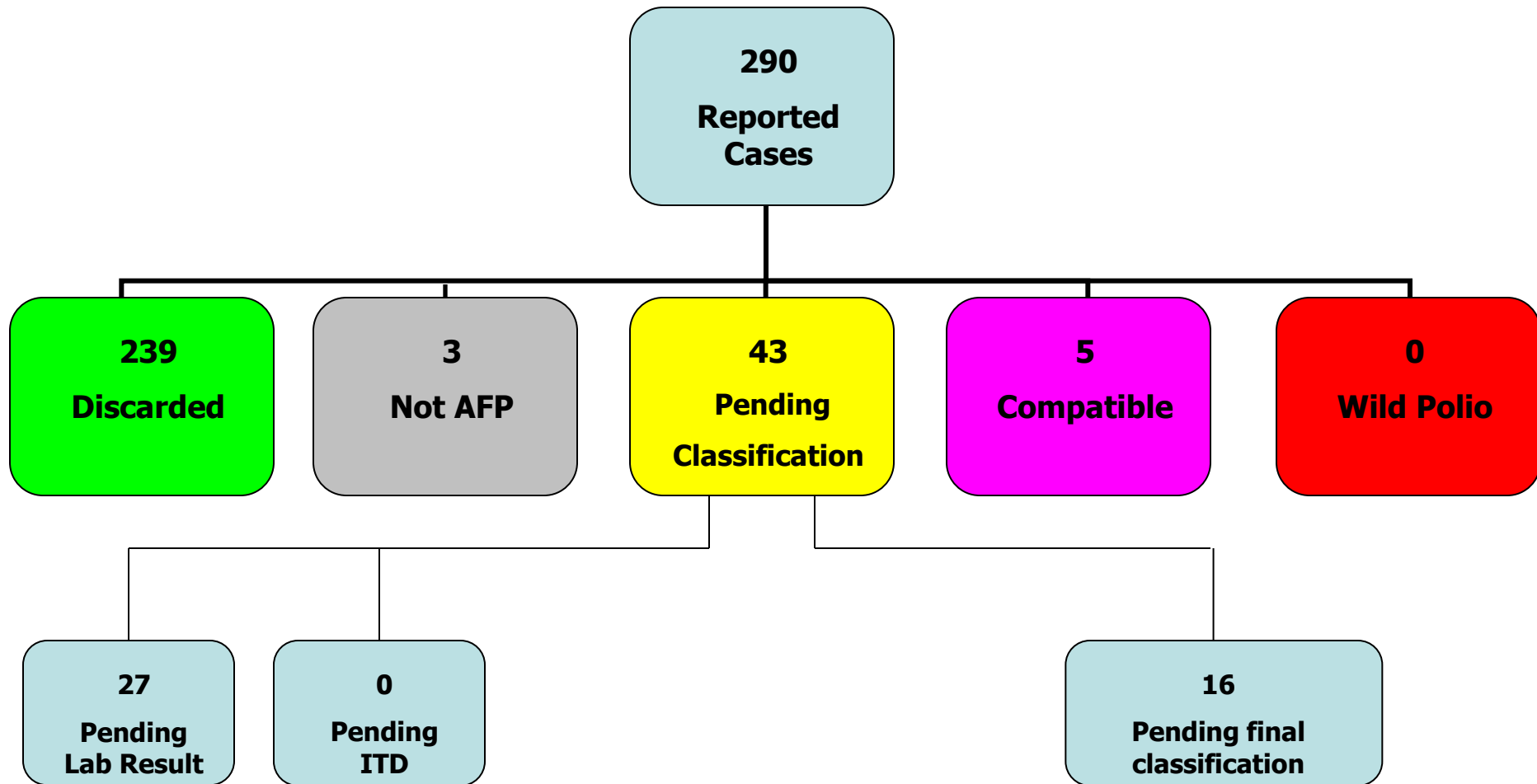
# Reported WPV cases by month of onset and SIAs, Angola 2008-2012\*



\* Data up to Oct 21st 2012

# AFP Case Classification Status

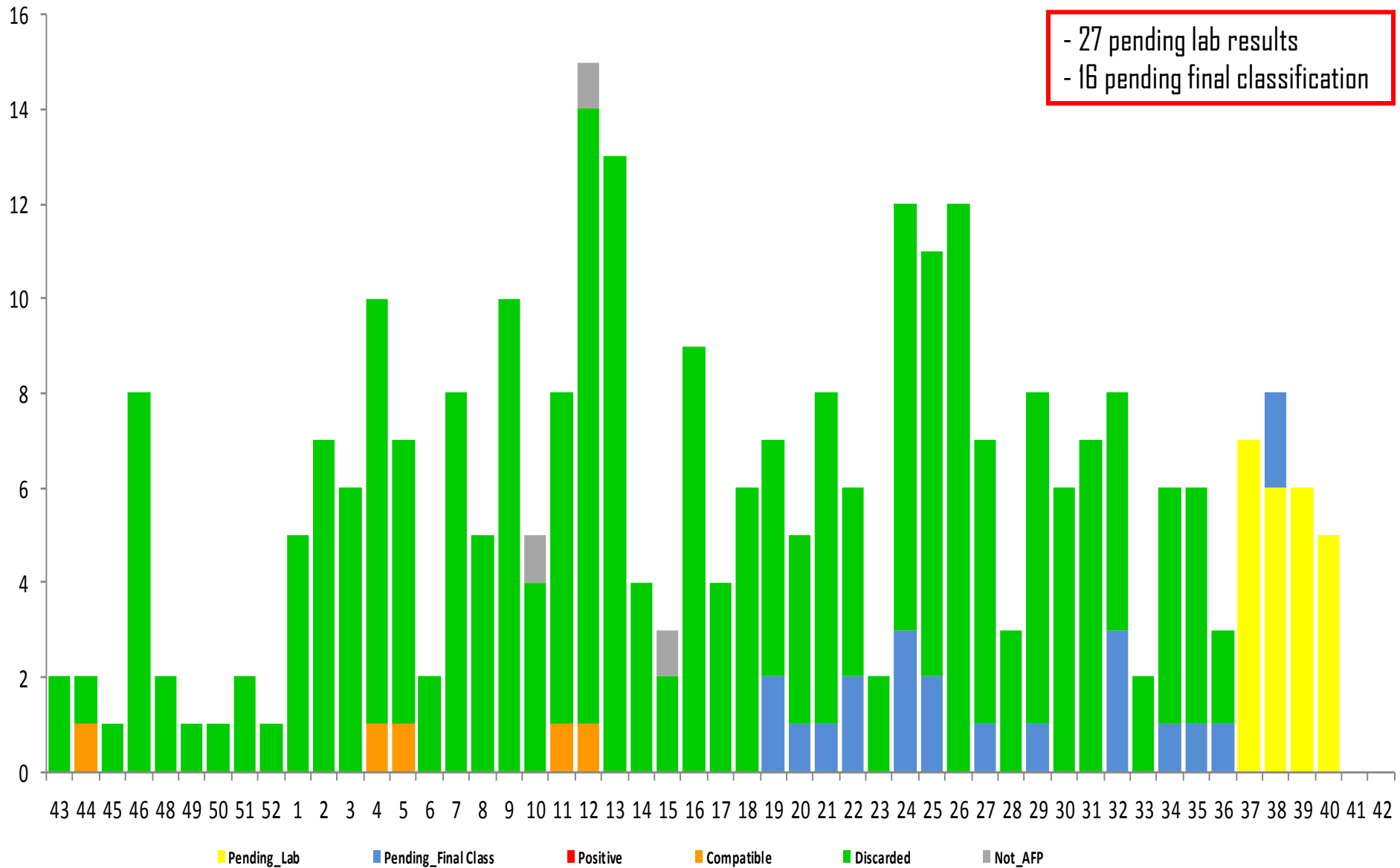
22 Oct 2011 to 21 Oct 2012



# AFP Case Classification by Week of Onset

## 22 Oct 2011 to 21 Oct 2012

- 27 pending lab results  
 - 16 pending final classification



# National AFP Surveillance Performance

## Twelve Months Rolling-period, 2010-2012

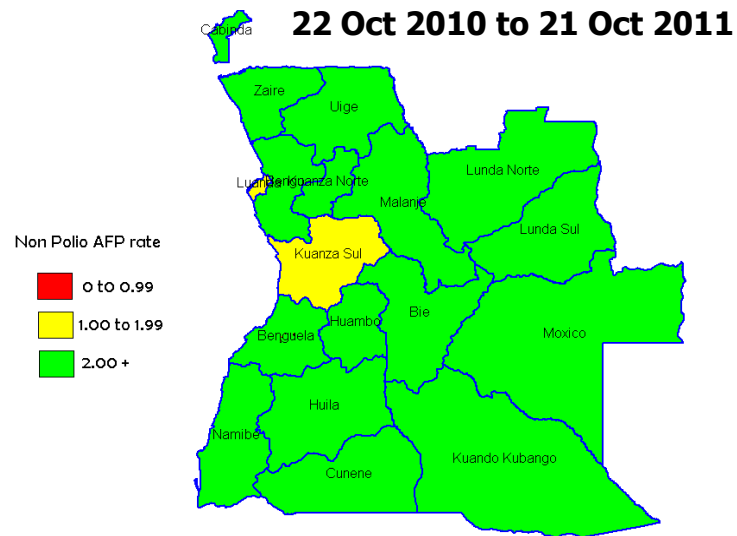
22 Oct 2010 to 21 Oct 2011

22 Oct 2011 to 21 Oct 2012

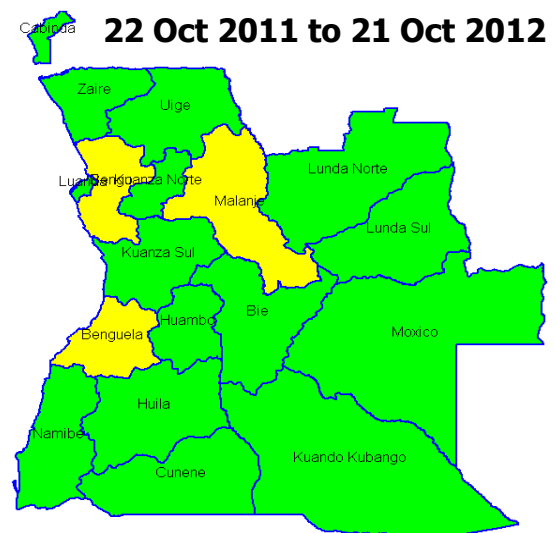
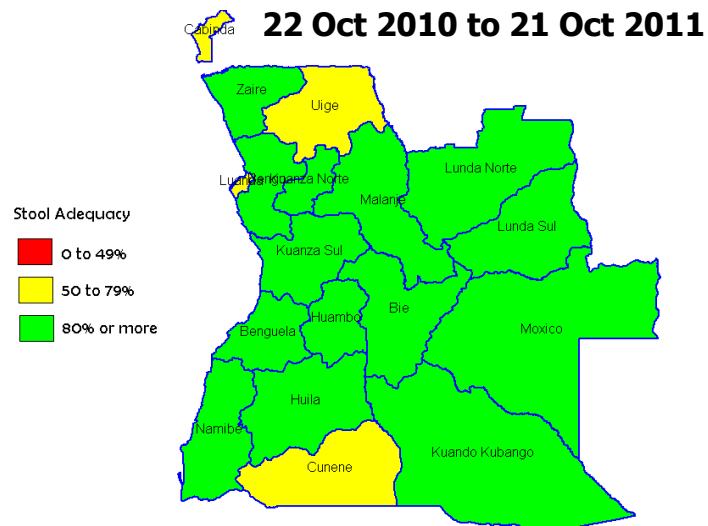
PROVINCE	NP AFP RATE	ADEQUACY RATE	SURV_INDEX	PROVINCE	NP AFP RATE	ADEQUACY RATE	SURV_INDEX
BENGO	4.0	100	4.0	BENGO	3.0	75	2.3
BENGUELA	2.7	94	2.5	BENGUELA	2.0	79	1.6
BIE	2.6	95	2.5	BIE	2.4	100	2.4
CABINDA	2.0	65	1.3	CABINDA	2.7	100	2.7
CUNENE	2.0	75	1.5	CUNENE	2.0	100	2.0
HUAMBO	2.3	100	2.3	HUAMBO	2.1	93	2.0
HUILA	2.0	100	2.0	HUILA	2.7	92	2.5
KUANDO KUBANGO	7.0	95	6.6	KUANDO KUBANGO	3.5	88	3.1
KWANZA NORTE	3.5	89	3.1	KWANZA NORTE	2.0	100	2.0
KWANZA SUL	1.6	90	1.4	KWANZA SUL	3.0	93	2.8
LUANDA	1.9	77	1.4	LUANDA	2.6	82	2.2
LUNDA NORTE	4.0	100	4.0	LUNDA NORTE	5.0	88	4.4
LUNDA SUL	5.5	100	5.5	LUNDA SUL	3.5	88	3.1
MALANGE	2.0	100	2.0	MALANGE	2.0	57	1.1
MOXICO	2.3	91	2.1	MOXICO	2.3	100	2.3
NAMIBE	6.0	100	6.0	NAMIBE	13.0	92	12.0
UIGE	3.9	68	2.6	UIGE	3.9	86	3.3
ZAIRE	6.0	88	5.3	ZAIRE	3.0	100	3.0
ANGOLA	3.0	87	2.6	ANGOLA	2.9	87	2.5

# Surveillance indicators – 12 months rolling

## NP AFP rate



## Stool Adequacy rate



# Pop 15yr > 50.000 Districts AFP Surveillance Performance (1 of 2)

## 22 Oct 2011 to 21 Oct 2012

Province	District	Under15	Min. Expected	Found	Adequate	NPAFPRate	% Stool Adequat	Surv_Index
BENGUELA	BAIA FARTA	59,049	1	0	0	0.0	0	0.0
BENGUELA	BALOMBO	66,889	1	4	3	4.0	75	3.0
BENGUELA	BENGUELA	388,369	8	6	4	0.8	67	0.5
BENGUELA	CAIMBAMBO	72,757	1	1	1	1.0	100	1.0
BENGUELA	CHONGOROI	68,760	1	1	1	1.0	100	1.0
BENGUELA	CUBAL	108,961	2	3	3	1.5	100	1.5
BENGUELA	GANDA	183,721	4	5	3	1.0	60	0.6
BENGUELA	LOBITO	511,617	10	12	10	1.2	83	1.0
BIE	ANDULO	90,288	2	4	4	2.0	100	2.0
BIE	CAMACUPA	85,796	2	2	2	1.0	100	1.0
BIE	CATABOLA	82,994	2	1	1	0.5	100	0.5
BIE	CHINGUAR	75,821	2	5	5	2.5	100	2.5
BIE	KUITO	208,139	4	3	3	0.8	100	0.8
CABINDA	CABINDA	212,109	4	8	8	1.8	100	1.8
CUNENE	CUANHAMA	55,597	1	1	1	1.0	100	1.0
CUNENE	OMBADJA	53,282	1	2	2	2.0	100	2.0
HUAMBO	BAILUNDO	110,607	2	2	2	1.0	100	1.0
HUAMBO	CAALA	97,767	2	2	2	1.0	100	1.0
HUAMBO	HUAMBO	241,313	5	2	1	0.4	50	0.2
HUAMBO	LONDUIMBALI	72,577	1	3	3	3.0	100	3.0
HUILA	CACONDA	65,775	1	1	1	0.0	100	0.0
HUILA	CALUQUEMBE	81,878	2	2	1	1.0	50	0.5
HUILA	CHIBIA	76,486	2	4	3	2.0	75	1.5
HUILA	GAMBOS	61,095	1	0	0	0.0	0	0.0
HUILA	LUBANGO	271,191	5	10	10	2.0	100	2.0
HUILA	MATALA	72,093	1	0	0	0.0	0	0.0
HUILA	QUIPUNGO	54,033	1	1	1	1.0	100	1.0

# Pop 15yr > 50.000 Districts AFP Surveillance Performance (2 of 2)

## 22 Oct 2011 to 21 Oct 2012

Province	District	Under15	Min. Expected	Found	Adequate	NPAFPRate	% Stool Adequat	Surv_Index
Kuando KUBANGO	MENONGUE	140,036	3	3	3	1.0	100	1.0
Kwanza NORTE	CAZENGO	72,065	1	2	2	2.0	100	2.0
Kwanza SUL	AMBOIM	66,774	1	1	1	1.0	100	1.0
Kwanza SUL	CASSONGUE	54,030	1	4	4	4.0	100	4.0
Kwanza SUL	KIBALA	68,065	1	2	1	2.0	50	1.0
Kwanza SUL	LIBOLO	60,943	1	1	1	1.0	100	1.0
Kwanza SUL	SUMBE	65,996	1	3	3	3.0	100	3.0
LUANDA	CACUACO	245,080	5	11	9	2.0	82	1.6
LUANDA	CAZENGA	654,774	13	11	9	0.8	82	0.7
LUANDA	INGOMBOTA	100,719	2	1	1	0.5	100	0.5
LUANDA	KILAMBA KIAXI	453,218	9	13	11	1.4	85	1.2
LUANDA	MAIANGA	305,884	6	6	6	1.0	100	1.0
LUANDA	RANGEL	98,532	2	3	2	1.0	67	0.7
LUANDA	SAMBA	150,775	3	5	5	1.7	100	1.7
LUANDA	SAMBIZANGA	293,895	6	10	8	1.7	80	1.3
LUANDA	VIANA	381,601	8	13	9	1.5	69	1.0
Lunda NORTE	CAMBULO	54,876	1	3	3	3.0	100	3.0
Lunda NORTE	CUANGO	75,083	2	1	1	0.5	100	0.5
Lunda NORTE	LUCAPA	67,098	1	4	4	4.0	100	4.0
Lunda SUL	SAURIMO	112,995	2	6	5	2.5	83	2.1
MALANGE	MALANGE	145,572	3	6	3	1.7	50	0.8
MOXICO	MOXICO	159,625	3	2	2	0.7	100	0.7
NAMIBE	NAMIBE	64,842	1	5	5	5.0	100	5.0
UIGE	MAQUELA DO ZOMBO	61,942	1	2	2	2.0	100	2.0
UIGE	NEGAGE	78,770	2	2	2	1.0	100	1.0
UIGE	SONGO	57,228	1	0	0	0.0	0	0.0
UIGE	UIGE	139,456	3	12	11	4.0	92	3.7

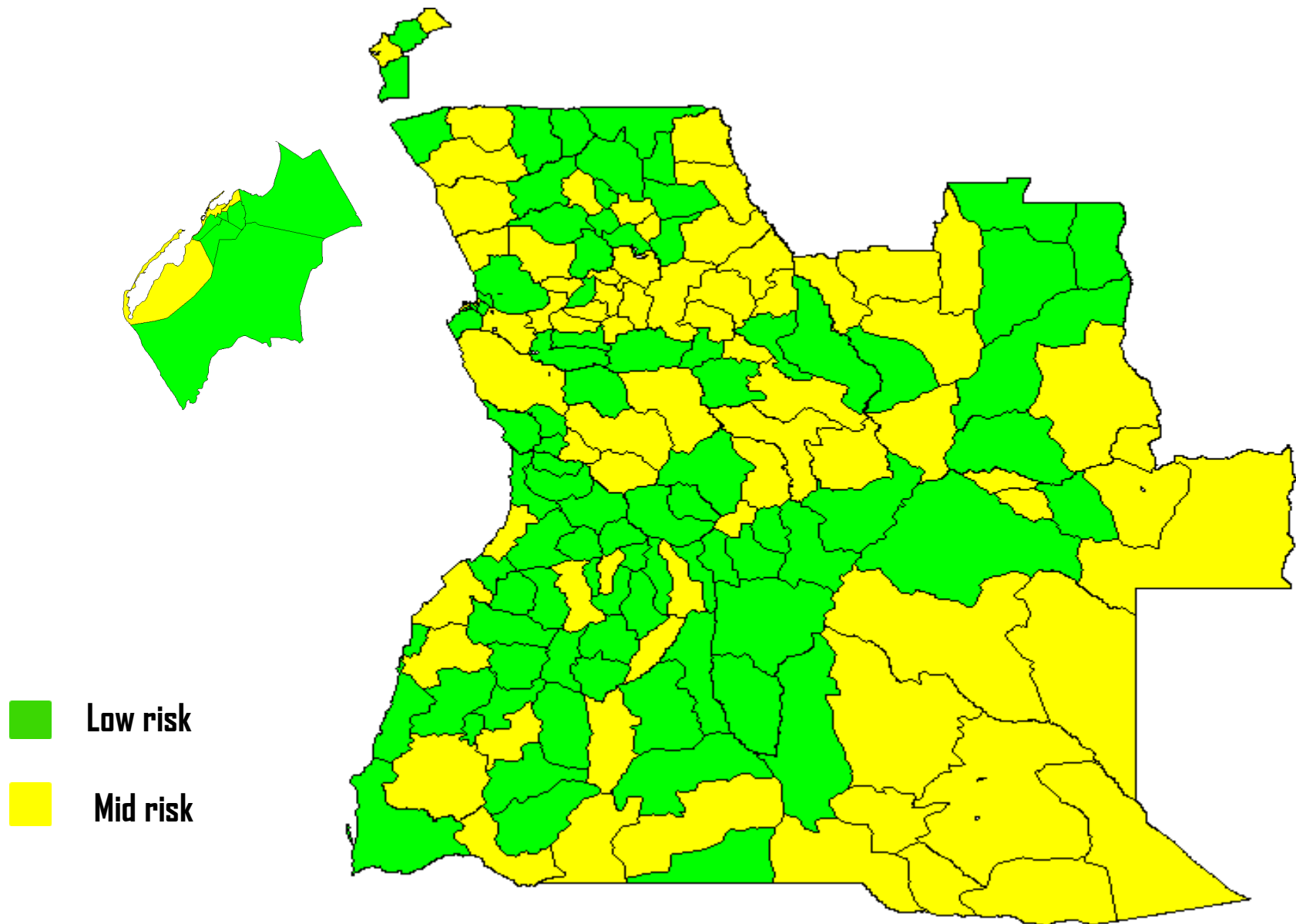


# National AFP Surveillance Indicators Summary 2008 – 2012

<b>Indicators</b>	<b>Target</b>	<b>2008</b>	<b>2009</b>	<b>2010</b>	<b>2011</b>	<b>2012*</b>
<b>NP-AFP rate per 100,000 <math>\leq</math> 15 Yrs</b>	$\geq$ 2.0	3.4	3.1	3.8	2.5	2.9
<b>Stool adequacy</b>	$\geq$ 80%	93%	92%	85%	87%	87%
<b>Investigated <math>\leq</math> 2 days of notification</b>	$\geq$ 80%	92%	94%	93%	85%	89%
<b>Specimen arriving at lab <math>\leq</math> 7 days since collection</b>	$\geq$ 80%	14%	10%	9%	9%	19%
<b>Specimen arriving in good condition</b>	$\geq$ 90%	99%	99%	94%	99%	97%
<b>Non-polio enterovirus isolation rate</b>	$\geq$ 10%	12%	13%	15%	12%	19%
<b>Lab result within 21 days of receipt</b>	$\geq$ 80%	98%	98%	91%	97%	89%

\* Data up to Oct 21<sup>st</sup> 2012

# Polio Risk analysis – Q3 2012



# Activities

SNID with t-OPV re-scheduled for 7-9  
December 2012:

- 9 provinces will be covered (Zaire, Cabinda, Uige, Malange , Lunda Norte, Lunda Sul, Luanda, Benguela and Kuando Kubango)
- Target population 3,692.579 children under-5.
- 4.509.000 tOPV doses already available in country